

**NEWS
CUTTINGS**

Lacrosse Meeting

WITH the idea of forming a Victorian Women's Lacrosse Association, a meeting of interested sportswomen will be held in the Y.W.C.A. at 8 p.m. on Monday.

The game is popular in England and America, but this is the first serious attempt to introduce it in Victoria.

A full team (12) has been formed at Williamstown, and a number of Y.W.C.A. members have received coaching and are ready to start.

Particulars can be obtained from Miss E. Clydesdale at the Y.W.C.A., 60 Russell Street, Melbourne, C.I.

'Arg' Mon' May. 18. 1936

LACROSSE.

Association to be Formed.

Officials of the sports department of the Y.W.C.A. have been promised further support in their proposal to promote an organisation to control lacrosse in Victoria. A meeting of those interested is to be held at the Y.W.C.A., 60 Russell-street, at 8 this evening.

'Herald' Thurs June. 4. 1936

LACROSSE PRACTICE

THE first definite step towards the establishment of lacrosse as a new winter sport in Victoria will be made on Saturday.

Sixteen girls from the Williamstown district and 10 from the Young Women's Christian Association will attend practice on the Y.W.C.A. cricket field at the St. Kilda end of the Albert Park Lake.

Practice will begin at 2.30 p.m., and the girls will receive instruction from the two English lacrosse players, Miss N. Rawlins and Miss Ellis.

'Arg' Sat. June. 6. 1936

WOMEN'S SPORTS.

Women to Play Lacrosse.

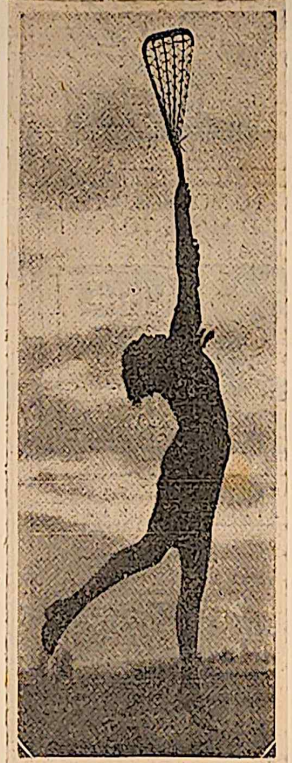
To-day, for the first time in the sporting history of Victoria, women will play lacrosse. At the Albert Park Y.W.C.A. cricket field two teams, one



from the Y.W.C.A. and the second from Williamstown, will take the field under the expert instruction of Miss Rawlins and Miss Ellis, two sportswomen who have played in English lacrosse teams, and are considered first-grade players. All sportswomen interested in the game are invited to attend the match or communicate with Miss Rawlins or Miss Clydesdale, who have been responsible for the organising of the game. Just as in other sports, the Y.W.C.A. has again led the way in lacrosse.

First Lacrosse Practice

Lacrosse was played by girls on Saturday for the first time in Victoria. On the Y.W.C.A. cricket field at Albert Park, players from Williamstown and from the Y.W.C.A. met for practice. Miss Nell Rawlins and Miss Ellis, who have played in England, were coaches.

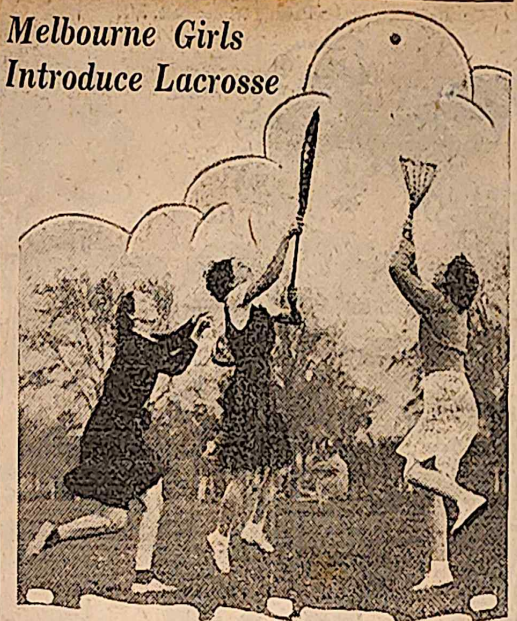


WOMEN'S LACROSSE was played at Albert Park on Saturday for the first time in Melbourne.

SEE REPORT

FIRST GAME
TO BE PLAYED
AT ALBERT PARK
SATURDAY
JUNE. 6. 1936

Melbourne Girls Introduce Lacrosse



Victorian sportswomen are showing keen interest in the development of lacrosse as a new winter sport. This striking action picture was taken at Albert Park, where nearly 30 girls attended the first coaching class.

FIRST LACROSSE PRACTICE ATTRACTS BIG FOLLOWING

Lacrosse, a speedy scientific game, which in England and America is almost as popular as hockey during the winter, was seen for the first time in Victoria on Saturday when nearly 30 girls attended the first of a series of coaching classes given by overseas experts, at Albert Park.

THE move to establish lacrosse in this State, which began some months ago in the Y.W.C.A. is headed by Miss Nell Rawlins, a former English Territorial lacrosse player, who has represented the North and West of England in big matches.

Miss Rawlins is assisted by the Physical Director of the Presbyterian Ladies' College (Miss E. Ellis), who also played in England, and the sports mistress of the College, Miss Molly Alexander, a prominent interstate baseball player.

More Followers

More girls are expected to attend the coaching classes on Saturday, and for the next few weeks players will be taught the correct use of the 'cross and how to catch and throw.

Lectures on the technical points of lacrosse will be given next month in the Y.W.C.A.

Miss Rawlins said today that if it is possible to secure four teams, competition matches will begin this winter. But first, demonstration games will be given

by two picked teams in an effort to interest the schools in the new sport.

One difficulty to be overcome in the introduction of lacrosse is to prove that it is not unsuited to women.

Many believe that lacrosse is a rugged game, but according to Miss Rawlins the modified rules make it very different to the men's game, although the system is the same.

Most of the play is in the air, and the leaping and stretching is considered physically beneficial, particularly for young girls. The skill necessary in tackling and checking also adds to the pace, and the proposed demonstration games later in the season are certain to attract interest.

'Arg' Sat. June. 20. 1936.

LACROSSE.
Proposed Formation of Association.
Arrangements have been made for a further practice to be held to-day for girls interested in the promotion of a women's lacrosse association. Any girls desirous of taking up this form of sport are invited to attend at the Y.W.C.A. cricket field at Albert Park.

Herald Thurs. July 16. 1936

Lacrosse Talks Begin At Y.W.C.A.

TALKS on tactics, places in the field, and general play in lacrosse were given for the first time this week to a large gathering of players at the Y.W.C.A. by Miss Nell Rawlins and Miss P. Ellis, who are coaching girls in the new sport this season.

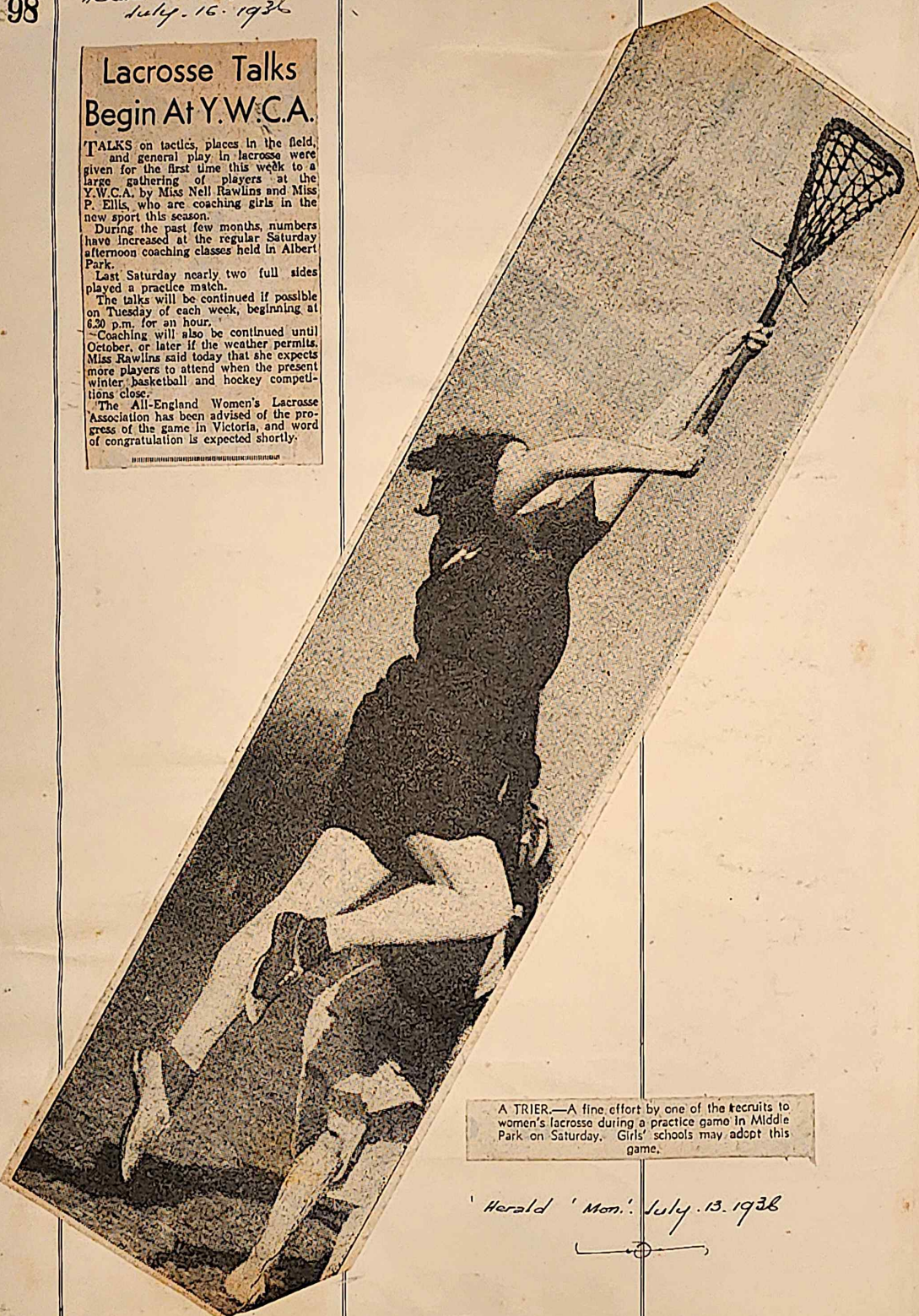
During the past few months, numbers have increased at the regular Saturday afternoon coaching classes held in Albert Park.

Last Saturday nearly two full sides played a practice match.

The talks will be continued if possible on Tuesday of each week, beginning at 6.20 p.m. for an hour.

Coaching will also be continued until October, or later if the weather permits. Miss Rawlins said today that she expects more players to attend when the present winter basketball and hockey competitions close.

The All-England Women's Lacrosse Association has been advised of the progress of the game in Victoria, and word of congratulation is expected shortly.



A TRIER.—A fine effort by one of the recruits to women's lacrosse during a practice game in Middle Park on Saturday. Girls' schools may adopt this game.

Herald 'Mon.' July 13. 1936

SUN PICTORIAL Mon. July 3. 36

'Herald' Tues. Aug. 4. 1936.

Lacrosse Not Popular Yet In Girls' Schools

Lacrosse, as a sport for women, has not yet found its way into the girls' schools of Melbourne, but efforts are being made to popularise it here.

Arriving in Melbourne from England yesterday, Miss Alison Kinnear, who was captain of her house lacrosse team at Wycombe Abbey, near Oxford, said lacrosse had replaced hockey in the games curriculum of many English girls' schools.

It was considered more beneficial exercise than hockey, and less rough. Inquiries at girls' public schools in

Melbourne showed that hockey is still safe from the inroads of lacrosse; actually, many of the sports mistresses have not yet seen lacrosse played by girls.

Mainly under the auspices of the Young Women's Christian Association, efforts have been made during the past three months to get two teams sufficiently proficient to play demonstration games before the sports mistresses of public schools.

Each Saturday girl lacrosse players meet at Albert Park, and two full teams of 12 aside are almost complete, and there will probably be a third.

Lacrosse Advantages

The physical director of the Y.W.C.A. in Melbourne (Miss N. Rawlins) said today that lacrosse was a very fine sport. She would like to see it played by girls along with hockey, but not to oust hockey.

"The stretching required in lacrosse gives girls more poise than does hockey," she said, "and it also promotes swiftness. It is certainly a very beneficial game, and is not rough."

Miss Rawlins is competent to speak on both hockey and lacrosse. She is a graduate of the Bedford Physical Training College, and in her varied sports career she was Irish hockey international (five years) and territorial player for the north and west of England, and also territorial lacrosse player for the north of England.

"Hockey Not Rough"

The sports mistress of Melbourne Church of England Girls' Grammar School (Miss F. Rowed) said she knew little of lacrosse among girls, but she defended hockey.

"I do not think that hockey is at all rough—as it is played in this school, at any rate," she said. "While I have been sports mistress here I have seen only one or two players receive minor injuries, and rough incidents are rare."

"In our recent hockey match against a Tasmanian team there was scarcely an incident that could be called rough."

The sports mistress of the Presbyterian Ladies' College (Miss M. Alexander) said: "Lacrosse is a good game for girls, and I am interested in the efforts at Albert Park to make it popular. I hope that the schools will take it up next year, although it should not actually take the place of hockey."

"I consider that lacrosse, as played by women, is less rough than hockey, and it is probably a better game for them physically, because they do not crouch over as in hockey."



LACROSSE GIRLS (left) hope soon to form an association in Melbourne. Right: Bolger (Richmond) was awarded a free kick for this incident, in which the umpire adjudged Coventry (Collingwood) to be the offender.

LACROSSE

Exhibition Teams Chosen.

For the exhibition match to be played next Saturday the following teams have been selected—

Royal Blue.—J. Temple (first home), L. Hansford (second base), J. Cathie (third base), D. Hick (right attack), G. Geddie (left attack wing), N. Rawlins (centre), L. Baker (right defence wing), M. Johnson (left defence wing), R. Harland (third man), D. Scarce (cover point), M. Barton (point), N. Stack (goal).
Navy Blue.—M. Hall (first home), J. Miller (second home), A. Grinnett (third home), F. Cockcroft (right attack), P. Hicks (left attack wing), M. Alexander (centre), J. Newhouse (right defence wing), Miss Ellis (left defence wing), B. Newhouse (third man), J. Mott (cover point), B. Hlick (cover), J. Reece (goal).

The teams include five internationals, who have played in England—Misses N. Rawlins, M. Johnson, P. Barton, M. Alexander and Ellis. Being the first organised lacrosse match to be played by women in Victoria, it is likely to attract a good deal of attention, it will be played at Lauriston Girls' School, commencing at 2.30.

Teams For First Lacrosse Match

AFTER a practice at Albert Park on Saturday two teams, 12 aside, will be selected from members of the Williamstown and Y.W.C.A. clubs to play in the first exhibition game of women's lacrosse in Victoria, at the Lauriston Girls' School on September 26.

Players who have had experience of lacrosse in England, Miss Nell Rawlins, an English territorial player, Meg Johnson, Margaret Barton and Miss P. Ellis will be included in the teams, also the Victorian interstate baseball player, Miss M. Alexander.

Two halves, each of a half hour duration, will be played and a woman umpire will be appointed to officiate.

Arrangements for the match, which will begin at 2.30 p.m., were finalised this week at a meeting of the Victorian Women's Lacrosse Association.

All girls' schools have been notified and a good attendance is expected.

The association hopes to get the support of the schools in the effort to establish lacrosse in Victoria.

"Herald" Thurs.
Sept. 24. 1936.

LACROSSE TEAMS FOR EXHIBITION

AN exhibition game of women's lacrosse, the first in Victoria, will be played at Lauriston Girls' School, 20 Huntingtower Road, Malvern, at 2.30 p.m. on Saturday between players from the Williamstown and Y.W.C.A. clubs.

The teams, which include five who have played lacrosse in England, Misses N. Rawlins, P. Ellis, M. Alexander, M. Johnson and M. Barton, are—

Navy Blue.—M. Hall (first home), A. Miller (second home), A. Grinnett (third home), F. Cockcroft (right attack), P. Hick (left attack wing), M. Alexander (centre), J. Newhouse (right defence wing), P. Ellis (left defence wing), B. Newhouse (third man), L. Mott (cover point), B. Hicks (cover), J. Reece (goal).
Royal Blue.—J. Temple (first home), L. Hansford (second home), J. Cathie (third home), D. Hick (right attack), G. Geddie (left attack wing), N. Rawlins (centre), L. Baker (right defence wing), M. Johnson (left defence wing), R. Harland (third man), D. Scarce (cover point), M. Barton (point), N. Stack (goal).

The Victorian Women's Lacrosse Association has sent invitations to all girls' schools to attend the exhibition.

It is the aim of the association to establish lacrosse in Victorian schools.

WOMEN LACROSSE PLAYERS GIVE EXHIBITION GAME

Move To Demonstrate Possibilities Of Sport For Schoolgirls

A FEATURE of the women's sporting programme on Saturday was an exhibition game of women's lacrosse, the first match played in Australia, at the Lauriston Girls' School, Malvern.

THE match, which was arranged to demonstrate the possibilities of lacrosse for schoolgirls, attracted a good deal of attention. The teams comprised girls from Y.W.C.A. and Williamstown clubs and also included four players with overseas experience—Misses N. Rawlins, P. Ellis, M. Alexander, M. Barton. Miss Meg Johnson acted as umpire.

TWO halves, each of 35 minutes, were played, and although Navy Blue team had an easy win, Royal Blue was unlucky not to score several times. As the players had only four months' training the catching and throwing was particularly good.

The teams were—Navy Blue: M. Hall (first home), J. Miller (second home), A. Grinnett (third home), F. Cockcroft (right attack), P. Hick (left attack wing), M. Alexander (centre), J. Newhouse (right defence wing), P. Ellis (left defence wing), B. Newhouse (third man), L. Mott (cover point), B. Hlick (cover), J. Reece (goal).
Royal Blue: J. Temple (first home), L. Hansford (second home), J. Cathie (third home), D. Hick (right attack), G. Geddie (left attack wing), N. Rawlins (centre), L. Baker (right defence wing), M. Johnson (third man), D. Scarce (cover point), M. Barton (point), N. Stack (goal).

Result—Navy Blue 8 goals (M. Alexander 3, P. Hick 1, A. Grinnett 1, J. Miller 1, M. Hall 1, F. Cockcroft 1) d. Royal Blue 1 goal (J. Temple).



LACROSSE GIRLS playing at Malvern on Saturday, when an exhibition match—the first of its kind in Australia—was organised to create interest in the game. The teams were recruited from Y.W.C.A. and Williamstown. (Picture also on page 20.)

"Herald"
Mon' Sept. 28. 1936.

Soaring High

IT was a soaring week-end. Footballers went aloft for high marks, the Aero Club flung up its annual pageant at Essendon, and a really historical item of uplift was presented when the first women's lacrosse match to be played in Australia was given its aerial action.

Lacrosse gave our open-air young women a chance to be pioneers of sport. The teams that turned out at Lauriston School, Malvern, comprised members of the newly formed Victorian Women's Lacrosse Association. Their winter's practice at Albert Park seems to have had a feminine thoroughness. Experienced men players, who watched their sisters in action on Saturday, tell me that the game reached a high standard.

The play of the game is mostly in the air. A lacrosse player reaching for the ball knows a thrill like that of the footballer who leaps for a mark.

For 62 Years

THE women's exhibition lacrosse had a keen and experienced onlooker in Mr G. Beech, known to sportsmen as the "father" of the game. He tells me that he gathered together the first men's lacrosse team 'way back in 1874. The playing of new games was then regarded as a not always harmless eccentricity, and even golfers had a hang-dog look about them.

Mr Beech recalls meeting his friend, Mr L. L. Mount, in the Albert Park paddocks. Mr Mount had a bundle of lacrosse sticks under his arm, and was looking for likely recruits for a scratch game. The flippant passers-by asked him why he was carrying a bundle of fishing nets.



LACROSSE by women's teams, Y.W.C.A. v. Williamstown—the first official women's match of the kind in Australia was played at Lauriston Girls' School, Malvern, on Saturday.