

*Meryl Bowrie*

SCOTTISH LADIES LACROSSE  
ASSOCIATION

SCOTLAND

v.

AUSTRALIA

Draw 2.30 p. m.

Saturday 18th March 1972.

Inverclyde, Largs, Ayrshire

By kind permission of the S. C. P. R.

Programme 5p.

*Meryl Bowrie*

SCOTTISH LADIES LACROSSE  
ASSOCIATION

SCOTLAND

v.

AUSTRALIA

Draw 2.30 p. m.

Saturday 18th March 1972.

Inverclyde, Largs, Ayrshire

By kind permission of the S. C. P. R.

Programme 5p.



## SCOTLAND

(blue and tartan )

GK	June Mollison	Edinburgh L. L. C.
P	Valerie Hercus	Glasgow L. L. C.
CP	Elizabeth Home (Capt. )	Reigate L. L. C.
3M	Lesley Anderson	Bedford C. P. E.
LD	Judith Minns	Newcastle L. L. C.
RD	Elizabeth Coleridge	Edinburgh U. L. C.
C	Fiona Murray	Glasgow L. L. C.
LA	Jackie Gow	Harrogate L. L. C.
RA	Fiona Macalister	Edinburgh L. L. C.
3H	Lesley Pearson	Lady Mable C. P. E.
2H	Rosemary Crawford	Beckingham L. L. C.
1H	Sheila Carter	Glasgow L. L. C.
Reserve: Pattie Barratt		Epsom & Ewell L. L. C.

Centre Umpire

Goal Umpires

## AUSTRALIA

The Australian Team to be chosen from -

	Ann Rowe
	Dalma Hannon
P	Denise O'Connor
	Vivienne Parker
	Donna Appleby
	Kendrea Pearson
1H	Pam Rolley
3H	Margot Taylor
LA	Elizabeth Cheevers
G	Pat Farrell,
RA	Anne Fowler
2H	Meredith Fowler
	Meryl Howie
3M	Barbara Mattsson
RD	Kay O'Loughlin
C	Geraldine Phillis
CP	Helen Stevens
LD	Paula Stockholm

Anita Clapperton

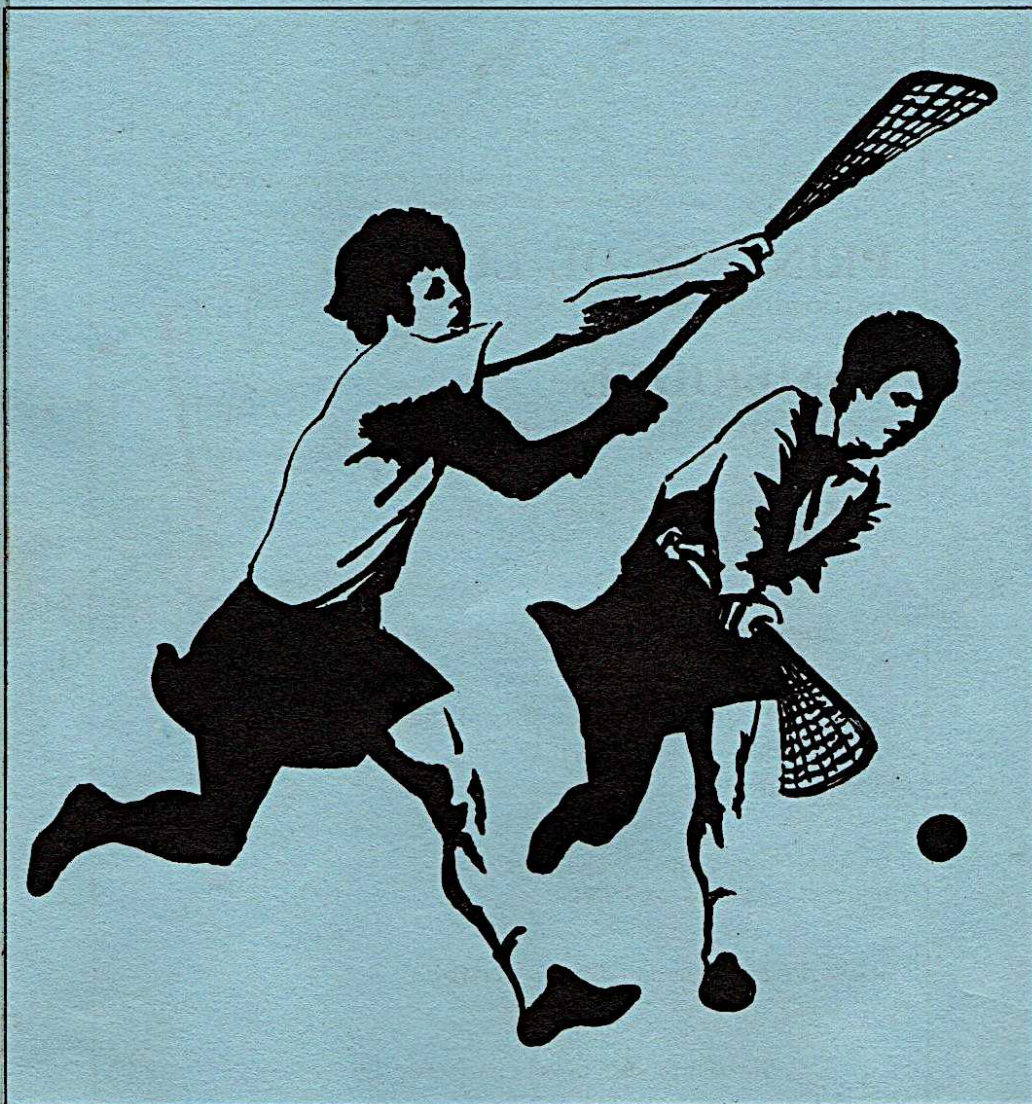
Patricia Brown

Patricia Finlayson



*Meryl Howie*

ALL ENGLAND WOMEN'S LACROSSE ASSOCIATION

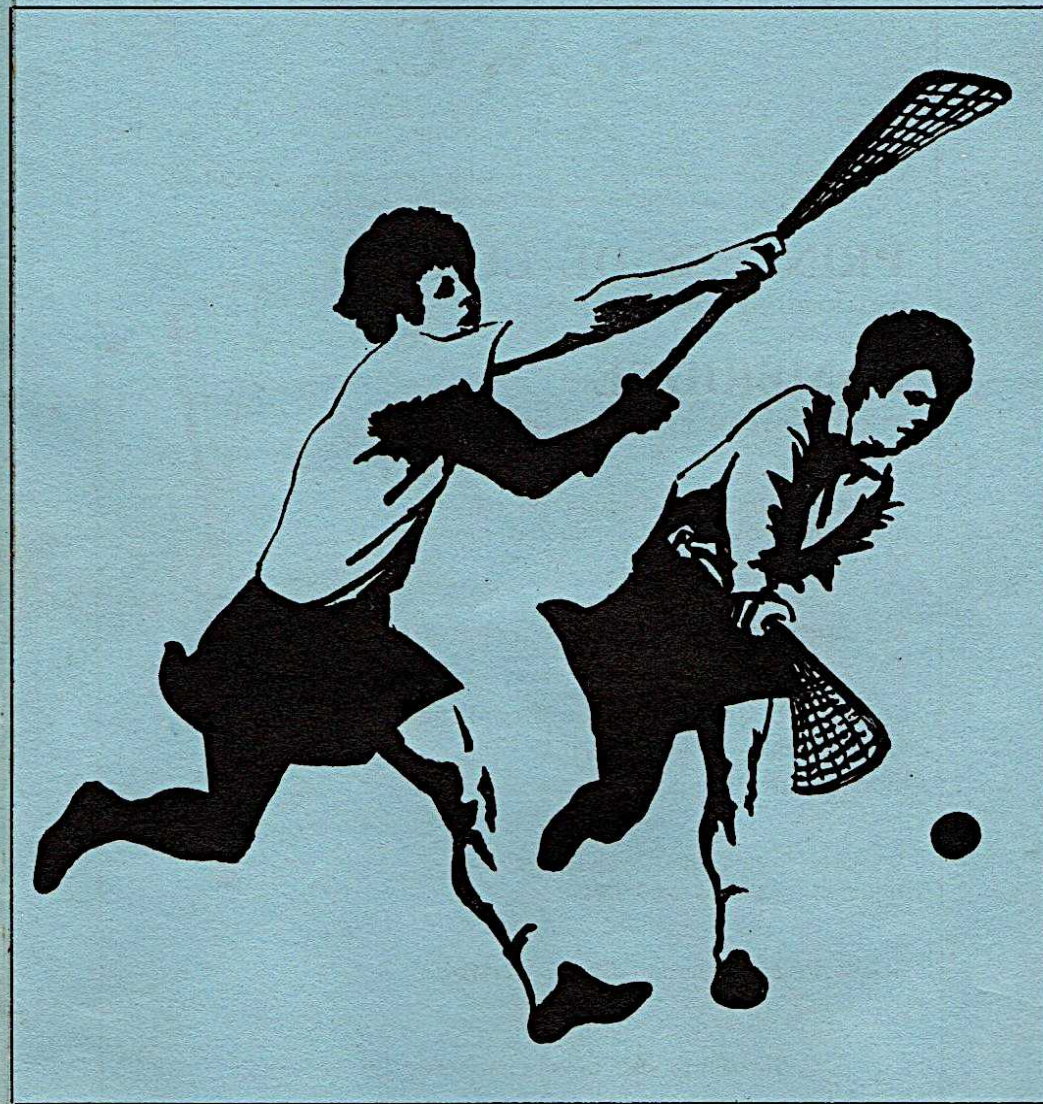


**1972 AUSTRALIAN WOMEN'S LACROSSE  
TOUR PROGRAMME**

**17th MARCH — 9th APRIL**

*Meryl Howie*

ALL ENGLAND WOMEN'S LACROSSE ASSOCIATION



**1972 AUSTRALIAN WOMEN'S LACROSSE  
TOUR PROGRAMME**

**17th MARCH — 9th APRIL**



# S. A. C.

YOUR GUARANTEE OF EXCELLENT QUALITY  
& CRAFTSMANSHIP

All our Lacrosse Sticks are officially approved by A.E.W.L.A.  
and accepted by the design centre

## PRINCESS DE LUXE

GUT STRUNG FOR MATCH PLAY

## CAMBRIDGE

STRUNG NYLON BRAID FOR BEGINNERS

Perfect shape and balance permanently  
maintained by patent laminated method  
of construction.

ALL STICKS TREATED WITH PRESERVATIVE

LACROSSE BALLS — Official regulation  
Field - Black - Yellow or White.  
Indoor - Low Bounce, Orange.

7-a-side Regulation Goal Rings with  
adjustable clamps and nets.

Goalie Pads - Guards - Masks - Nets

SPECIAL EDUCATIONAL PRICE LIST ON APPLICATION

Restrings and repairs promptly by experts

Miniatures presented to Tournament Finalists

## SPORTS ACTIVITY Co. Ltd.

Chetwynd House, Camps Road, Bartlow, S. Cambs.  
CB1 6PP



## TOUR COMMITTEE

- Chairman:* Mrs. Pauline Fancourt,  
39 Merrylands Road, Great Bookham, Surrey.  
Tel.: (Home) Bookham 4595; (Office) 01-580 9092.
- Secretary:* Miss Jane Pryke,  
Room 322, 26 Park Crescent, London, W1N 4EX.  
Tel.: 01-636 1123.
- Treasurer:* Miss Caro Macintosh,  
2 Huntsmead, Westbridge Park, Sherborne, Dorset.  
Tel.: Sherborne 2936.
- Publicity:* Miss Lynne Bailey,  
Foxwalks, Grafton Lane, Bromsgrove, Worcs.  
Tel.: Bromsgrove 73462.
- East:* Mrs. Margaret Macfarlane,  
33 Carisbrooke Road, Harpenden, Herts.  
Tel.: Harpenden 5668.
- Midlands:* Miss Alison Brown,  
Malvern Girls College, Malvern, Worcs.
- North:* Miss Carol Haydn-Evans,  
36 Lynmouth Road, Liverpool, L17 6AW. Tel.: 01-427 6007.
- South:* Mrs. Jane Peat,  
57 Hillside Road, Northwood, Middx. Tel.: Northwood 23838.
- West:* Miss Elizabeth Carling,  
Flat 1, Rose Villa, Milford Hollow, Salisbury, Wilts.  
Tel.: Salisbury 4074.
- Scotland:* Miss Ruth Milne,  
208 Nithsdale Road, Glasgow, S.1. Tel.: 041-424 3440.
- Wales:* Miss June Donovan,  
51 St. Nicholas Road, Barry, Glam.



# PROGRAMME

## In Scotland

FRIDAY, 17th March:

Arrive Prestwick—Reception by S.L.L.A.  
Travel to Inverclyde Recreation Centre, Largs.

SATURDAY, 18th March

Morning: Free for lacrosse practice.  
Afternoon: Australia v. Scotland at Inverclyde, draw 2.30 p.m.  
Evening: Dinner at Inverclyde.

SUNDAY, 19th March

Sightseeing in Scotland.  
Evening: Travel by coach to Harrogate. Official welcome by the North President, Mrs. Rita Dolbey.

## In the North

MONDAY, 20th March

Sightseeing in the North.

TUESDAY, 21st March

Morning: Free. Lunch at Harrogate College given by Mrs. Todd.  
Afternoon: Quadrangular match, Australia, B.U.S.F., Midlands, and North at Harrogate College followed by tea, draw 1.45 p.m.  
Evening: Travel by car to I.M. Marsh College, Liverpool.

WEDNESDAY, 22nd March

Morning: 10.15 a.m., reception by Lord Mayor of Liverpool at the Town Hall.  
Afternoon: Demonstration seven-a-side game at I.M. Marsh College.  
Evening: Dinner at I.M. Marsh College.

THURSDAY, 23rd March

Morning: Travel by coach to Manchester.  
Afternoon: Australia v. England at Longford Stadium, Manchester, followed by tea at the Stretford Civic Theatre, draw 2.30 p.m.

FRIDAY, 24th March

Morning: Free, lunchtime leave by plane for Heathrow Airport.  
Afternoon: 12.45 p.m., Reception at Heathrow Airport and official welcome by President of All England Women's Lacrosse Association, Miss Margaret Boyd, O.B.E.

## In the South

SATURDAY, 25th March

Morning: Australia v. England Reserves at Merton Abbey—draw 11.30 a.m.  
Afternoon: Clubs and Colleges Tournament at Merton Abbey.  
Evening: 7.30 p.m., Buffet Supper given by the South at the English Speaking Union.

SUNDAY, 26th March

Free with hostesses or friends.

MONDAY, 27th March

Free day.  
Evening: Supper and Theatre Trip.

TUESDAY, 28th March

Morning: 10 a.m., Sightseeing Tour of London by coach.  
Afternoon: Lacrosse practice at Gunnersbury Park.

WEDNESDAY, 29th March

Morning: Travel to Merton Abbey.  
Afternoon: Australia v. Wales at Merton Abbey during the Schools Tournament, draw 1.30 p.m.  
Evening: 6.45 p.m., Dinner at the Tower of London followed by the Ceremony of the Keys.

THURSDAY, 30th March

Leave for Easter in Holland.

## In the East

TUESDAY, 4th April

Arrive in the East from Holland.  
Evening: Free with hostesses.

WEDNESDAY, 5th April

Morning: Lacrosse practice in Rothamsted Park, Harpenden.  
Afternoon: Visit to Woburn Safari Park by coach, 2.00 p.m.  
Evening: Free.

THURSDAY, 6th April

Morning: Free.  
Afternoon: Quadrangular match, East, South, West and Australia at Clarence Park, St. Albans, followed by tea, draw 2.15 p.m.  
Evening: 6.30 p.m., Wine and Cheese Party at the Small Public Hall, Harpenden.

FRIDAY, 7th April

Morning: Lacrosse practice in Rothamsted Park, Harpenden.  
Afternoon: Free for sightseeing with hostesses.  
Evening: 6.00 p.m., Cocktail Party at the White House, London, W.1, given by the Past Tourers Club.

SATURDAY, 8th April

Morning: Free.  
Afternoon: Australia v. Great Britain at Hurlingham Park followed by tea at the Hurlingham Club, draw 3.00 p.m.  
Evening: Farewell Banquet at the Charing Cross Hotel, Strand, 7.30 for 8.00 p.m.

SUNDAY, 9th April

Morning: Leave by coach for Heathrow Airport for flight to U.S.A.



## AUSTRALIAN TOURING TEAM

Colours: Green and Yellow

The team will be selected from the following :



**Ann Rowe**—*Captain*—Australian Team 1969–71, Victorian Team 1962–64 and 1966–71. Rental representative for Hertz Rent-a-car. Hobbies include softball, swimming, driving and cooking.



**Barbara Mattsson**—*Vice-Captain*—Australian Team 1968–72, South Australian Team 1967–71 and Brighton Club 1965–68, 1969–71. Photographer's assistant. Hobbies include rowing, softball, music, hockey and playing the guitar.



**Dalma Hannon**—Australian Team 1971, Victorian Team 1968–71. Shop manageress, Girl Guides Association of Victoria. Hobbies include badminton, hockey and driving.



**Denise O'Connor**—First year science student at Melbourne University. Hobbies include reading, sewing, playing or watching most sports, playing the guitar and singing.



**Vivienne Parker**—Australian Team 1971, Victorian Team 1968–71. Receptionist/Secretary. Hobbies include squash, badminton, reading and sewing.



**Donna Appleby**—Victorian State Goaly 1966–71. Hobbies include basketball, lacrosse and reading.



**Kendrea Pearson**—Australian Team 1969 and 1971, Victorian Team 1962–64. Reception clerk at Victorian Government Tourist Bureau, Melbourne Airport. Hobbies include cooking, swimming, basketball, country driving and meeting people.



**Pam Rolley**—Australian Team 1971, Victorian Team 1969–71. Clerk. Hobbies include squash and swimming.





**Margot Taylor**—Australian Team 1971, Victorian Team 1970–71. Trainee draughtswoman. Hobbies include swimming, squash and music.



**Elizabeth Cheevers**—Victorian Team 1968–71. Clerk—qualified fashion buyer. Hobbies include tennis, squash, lacrosse, music, bushwalking and Australian literature.



**Pat Farrell**—Australian Team 1972, South Australian Team 1970–71, Plympton Club 1966–71. Optical clerk. Hobbies include softball and basketball.



**Anne Fowler**—Australian Team 1971–72, South Australian Team 1969–71, Woodville Club 1968–70. Secretary. Hobbies include squash, bowling and cooking.



**Meredith Fowler**—Australian Team 1972, South Australian Team 1969–70, Woodville Club 1968–71. Stenographer. Hobbies include sewing, cooking and basketball.



**Meryl Howie**—Australian Team 1972, South Australian Team 1970–71, Plympton Club 1968–71. Student teacher 4th year. Hobbies include tennis, natural history, literature and photography.



**Kay O'Loughlin**—Australian Team 1970 and 1972, South Australian Team 1970–71, Plympton Club 1969–71. Student Teacher. Hobbies include water skiing and baseball.



**Geraldine Phillis**—Australian Team 1969–70 and 1972, South Australian Team 1966–71, Plympton Club 1965–68. Primary and infant school teacher. Hobbies include squash, beach, dressmaking, cooking and oil painting.





**Helen Stevens**—Australian Team 1968–70 and 1972, South Australian Team 1966–71, Plympton Club 1966–71. Secretary. Hobbies include softball and basketball.



**Paula Stockholm**—Australian Team 1965, 1970 and 1972, South Australian Team 1963–66, 1970–71, Plympton Club 1963–66, 1970–71. Secretary—Flinders University. Hobbies include squash, baseball and reading.



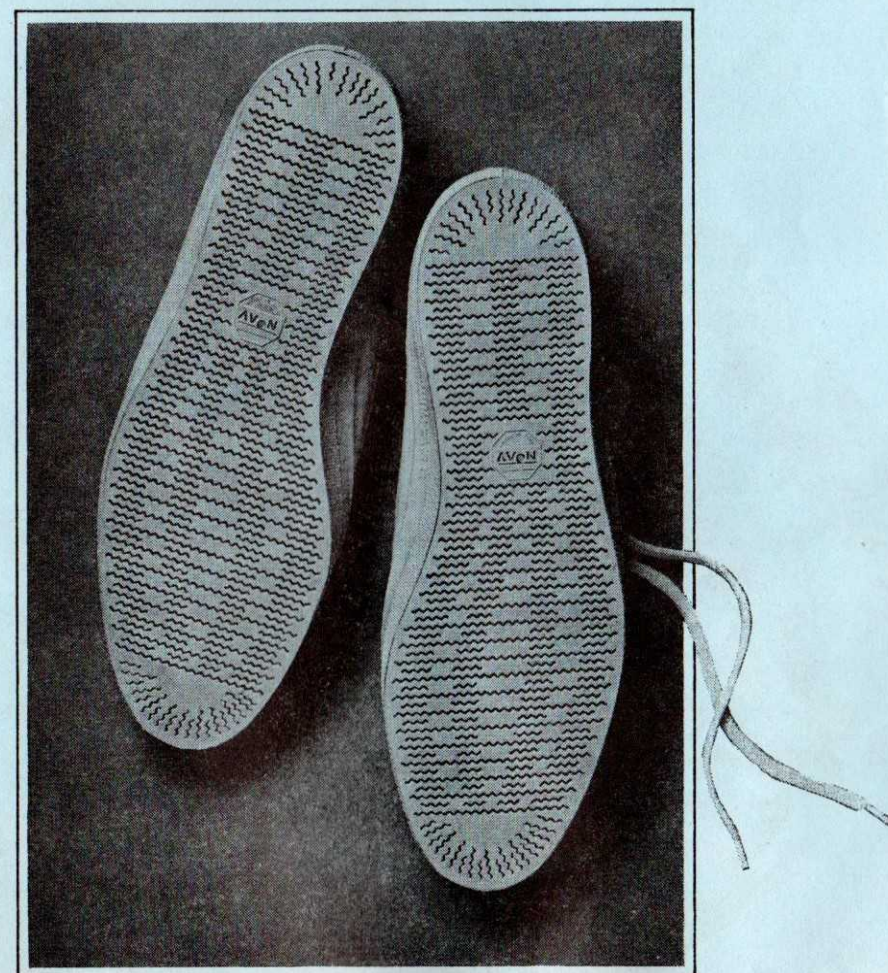
**Pat Forrester** is the manageress of the Australian Touring Team. She is very active both on and off the lacrosse field. In 1965 Pat started and played for the East Torrens Club, from 1966–71 was South Australian delegate for the Australian Council, in 1966 was goal-keeper for the State Team, from 1967–71 managed the State Team, from 1969–70 managed the Australian Team, from 1969–71 was elected a member of the State Association, in 1970 was editor of the first Australian Women's Lacrosse rule book, in 1971 was Vice-President of the Australian Council and is now the manageress of the first tour to Great Britain by an Australian Women's Lacrosse Touring Team. As well as her lacrosse interests she is a private secretary and housewife with three children. Her special interests, when she can find the time, are squash and cooking.

## Look at the bottom of a pair of our shoes

Every Lacrosse player knows the importance of the correct pair of shoes. Avon have designed a Sportsman Shoe for the indoor sportswoman. Superb grip, great strength, and a style that puts you points ahead before you start. Used by Roger Taylor for indoor tennis, Avon's Sportsman Shoe has been tested and tried by Britain's best and found to be 'faultless'. So next time you slip at that vital point, think about Avon: think about the world's best Sportsman's Shoe.



**like every other work of art  
you'll see the name of the artist**

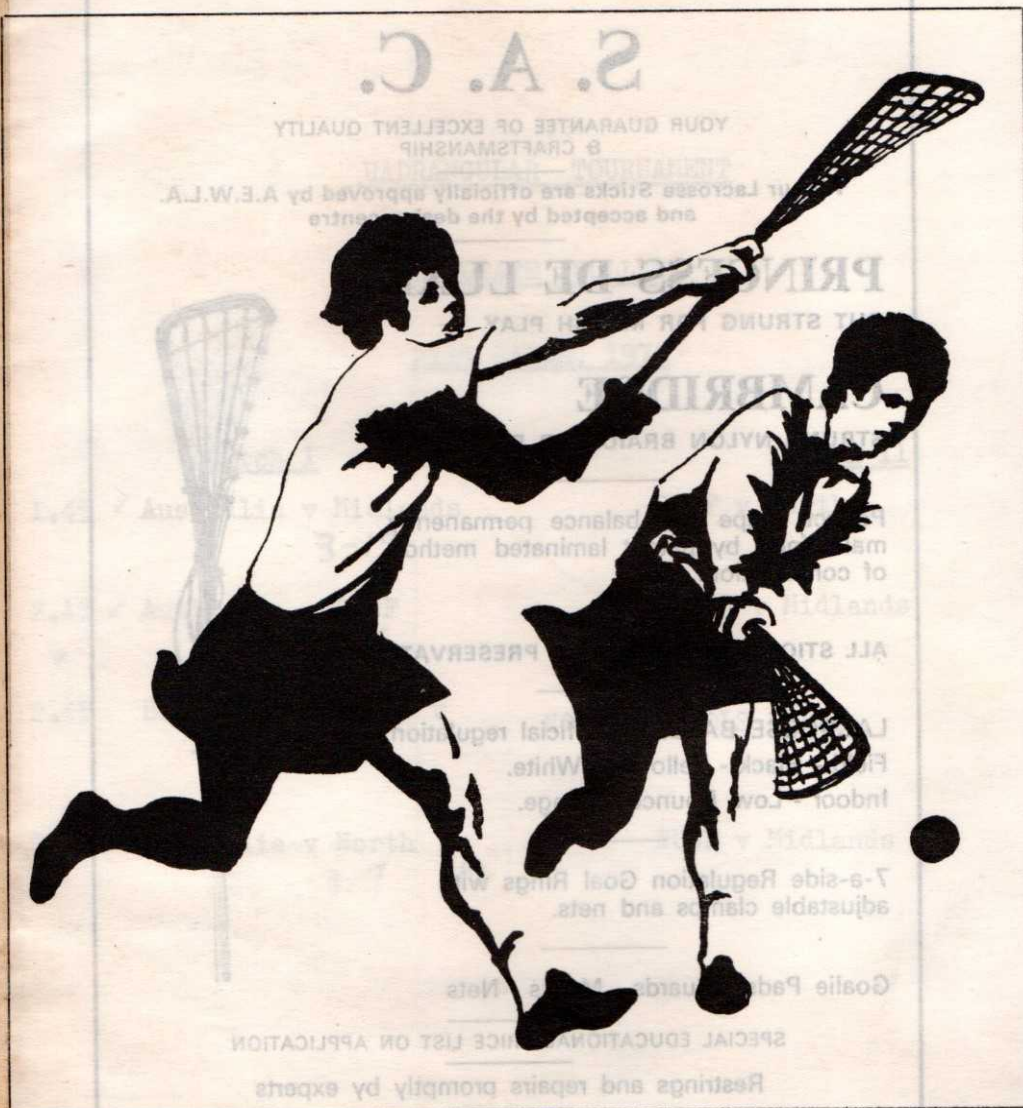


For further information contact

Avon Footwear Limited, Industrial Estate, Bridgend, Glamorgan, Wales. Tel: Bridgend (STD 0656) 3211



ALL ENGLAND WOMEN'S LACROSSE ASSOCIATION



## QUADRANGULAR MATCH

Australia, North, Midlands & B.U.S.F.

TUESDAY, 21st MARCH, 1972

ALL ENGLAND WOMEN'S LACROSSE ASSOCIATION



## QUADRANGULAR MATCH

Australia, North, Midlands & B.U.S.F.

TUESDAY, 21st MARCH, 1972



# S. A. C.

YOUR GUARANTEE OF EXCELLENT QUALITY  
& CRAFTSMANSHIP

All our Lacrosse Sticks are officially approved by A.E.W.L.A.  
and accepted by the design centre

## PRINCESS DE LUXE

GUT STRUNG FOR MATCH PLAY

## CAMBRIDGE

STRUNG NYLON BRAID FOR BEGINNERS

Perfect shape and balance permanently  
maintained by patent laminated method  
of construction.

ALL STICKS TREATED WITH PRESERVATIVE

LACROSSE BALLS — Official regulation  
Field - Black - Yellow or White.  
Indoor - Low Bounce, Orange.

7-a-side Regulation Goal Rings with  
adjustable clamps and nets.

Goalie Pads - Guards - Masks - Nets

SPECIAL EDUCATIONAL PRICE LIST ON APPLICATION

Restrings and repairs promptly by experts

Miniatures presented to Tournament Finalists

## SPORTS ACTIVITY Co. Ltd.

Chetwynd House, Camps Road, Bartlow, S. Cambs.  
CB1 6PP



### QUADRANGULAR TOURNAMENT

HARROGATE COLLEGE

21st MARCH, 1972

#### Pitch 1

1.45 ✓ Australia v Midlands

3-12

2.15 ✓ Australia v BUSF

3-7

2.45 Harrogate College v  
Bolton

3.15 ✓ Australia v North

3-7 (2)

#### Pitch 11

BUSF v North

North v Midlands

NORTH SCHOOLS FINAL

BUSF v Midlands



# TEAMS

## AUSTRALIA

## NORTH

## BRITISH UNIVERSITIES

## MIDLANDS

To be chosen from:-

A. Rowe	26	Thornbury	C. Haydn-Evans	G
D. Hannon	29	Balaclava	V. Fairclough	P
D. O'Connor	19	Pascoe Vale	M. Howarth	CP
V. Parker	19	Williamstown	K. Abbott	3M
D. Appleby	23	Glenroy	J. Minns	LD
K. Pearson	22	Ascot Vale	V. Farrand	RD
P. Rolley	18	Williamstown	K. Howarth	C
M. Taylor	18	Williamstown	M. Knowles	RA
E. Cheevers	21	East Malvern	J. Ashworth	LA
P. Farrell	21	Kurralt	C. Jackson	3H
A. Fowler	23	Torrensville	P. Pimbley	2H
M. Fowler	21	Marion	M. Davies	1H
M. Howie	20	Clarence Gardens	J. Gow	Res.
B. Mattson	21	Warradale		
K. O'Longwin	19	Parkholme		
G. Phillis	21	Plympton Park		
H. Stevens	20	Glenelg North		
P. Stockholm	23	Camden Park		

M. Chester	S. Greene	G
J. Spilman	V. Rogers	P
M.L. Frawley	J. Ley	CP
A. Bransby-Zachary	B. Davies	3M
E. Coleridge	P. Dunn	LD
B. Cobb	C. Chamberlain	RD
R. Pusinelli	J. Martindale	C
S. Huyshe	J. Atkinson	RA
C. Brackenridge	C. Cleaver	LA
U. Wintle	J. O'Connor	3H
S. Alpe	L. Bailey	2H
D. Bell	L. Worrall	1H
A. Blackwell	A. Reeve	Res.



CENTRE UMPIRES

P. Johnson  
E. Blaydes  
P. Kennerley

GOAL UMPIRES

F. Burridge  
J. Boothman  
M. Heaton  
W. Reynolds  
D. Hairs  
D. Young  
A. Kennedy  
B. Trafford

SCHOOLS FINAL

Centre: B. Trafford  
Goal: A. Blackwell  
J. Gow

# LEN SMITH'S (SPORTSWEAR) LTD.

ARE PROUD TO BE  
SUPPLIERS TO THE

GREAT BRITAIN  
ENGLAND  
SCOTTISH  
WELSH  
LACROSSE TEAMS

also to Regions, Counties, Clubs, Universities, Colleges and Schools in all parts of the British Isles.

LEN SMITH'S also supply the:-

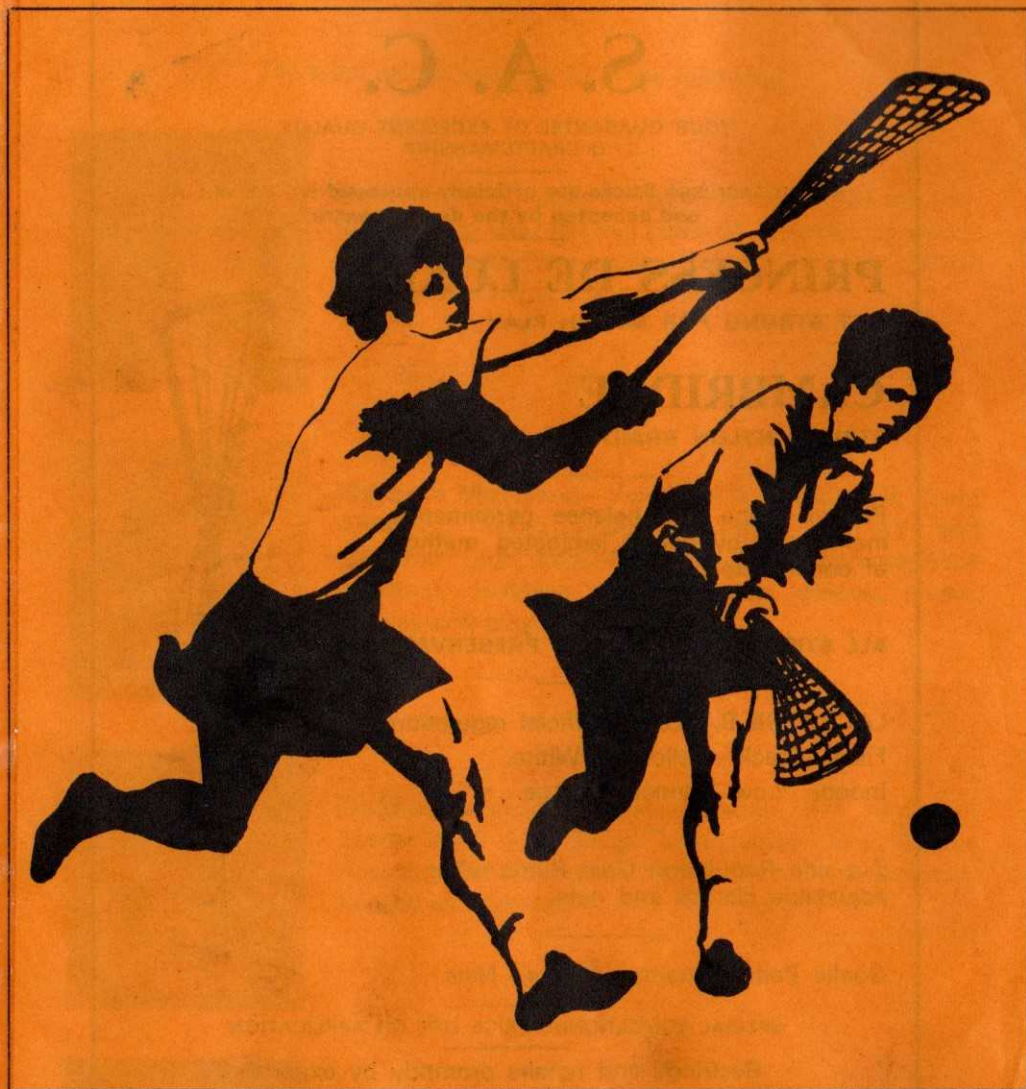
ENGLAND, SCOTTISH, WELSH, AUSTRALIAN, NEW ZEALAND & CANADIAN HOCKEY TEAMS, THE ENGLAND, SCOTTISH & WELSH NETBALL TEAMS, THE ENGLAND CRICKET & VOLLEYBALL TEAMS.

For further illustrated catalogue  
of Ladies and Girls sportswear  
write to :-

**LEN SMITH'S (SPORTSWEAR) LTD.**  
**36/40 Heath Road - Twickenham - Middlesex**  
**Telephones: 01-892 2201/2/3**



ALL ENGLAND WOMEN'S LACROSSE ASSOCIATION



**AUSTRALIA v. ENGLAND RESERVES**

FOLLOWED BY

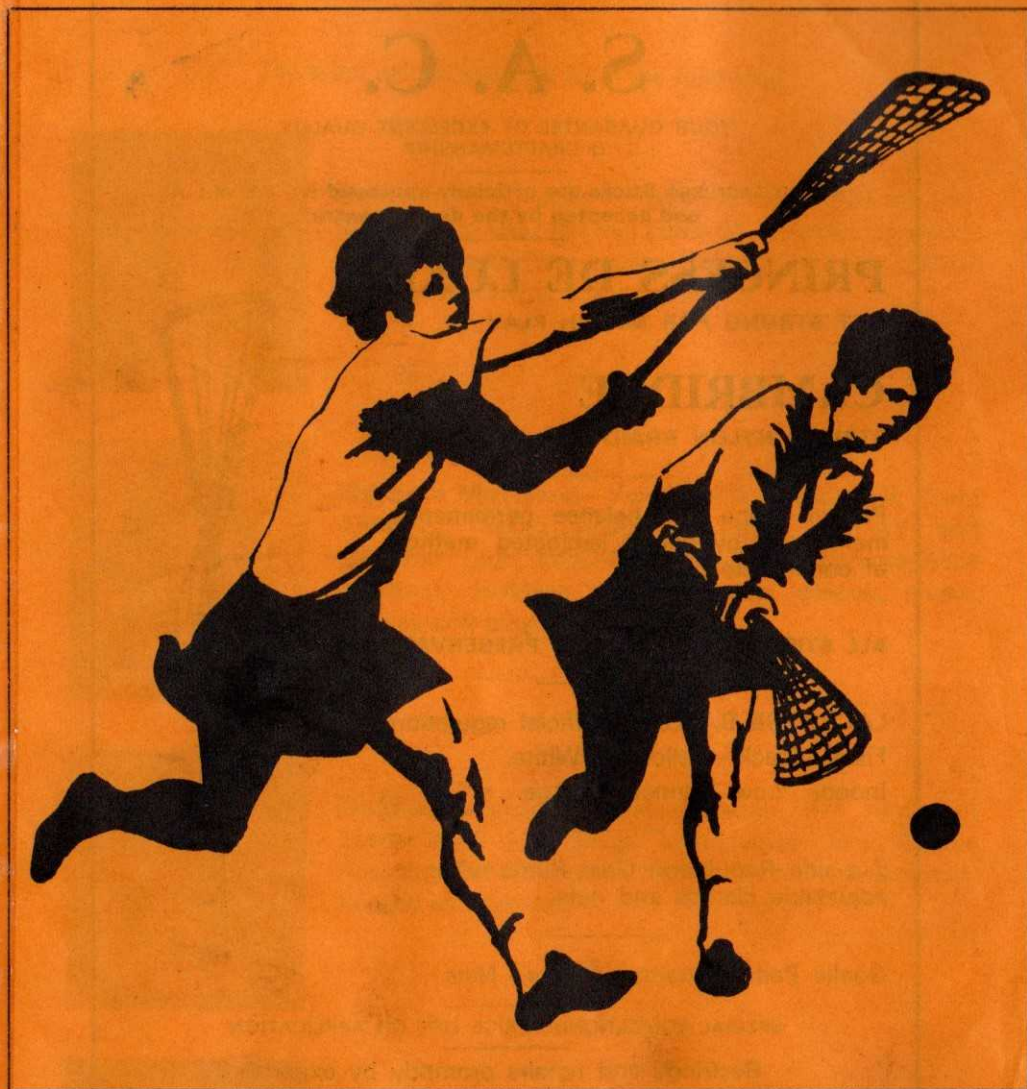
**1972 CLUBS & COLLEGES TOURNAMENT**

**Merton Abbey, S.W.19**

**SATURDAY, 25th MARCH, 1972**

*lost 2-8*

ALL ENGLAND WOMEN'S LACROSSE ASSOCIATION



**AUSTRALIA v. ENGLAND RESERVES**

FOLLOWED BY

**1972 CLUBS & COLLEGES TOURNAMENT**

**Merton Abbey, S.W.19**

**SATURDAY, 25th MARCH, 1972**

*lost 2-8*



**ENGLAND RESERVE TEAM**  
Colours: Navy Blue and Light Blue

**Goal:** **Susan Curtis**, South Wilts Grammar School, Dartford C.P.E. Student. England Reserves 1969-71, West, Epsom and Ewell Lacrosse Club. Hobbies include horse riding and badminton.

**Point:** **Sara Clayton**, Captain. Beckenham Grammar School, Chelsea C.P.E. P.E. Adviser at Winchester. England 1967-71, East 1965-71, Epsom and Ewell Lacrosse Club. Hobbies include all sport, music and theatre.

**Cover Point:** **Marjorie Howarth**, Levenshulme Grammar School, Lady Mabel College. Head of P.E. at Hill and Oakmore Secondary Girls School. England 1971, England Reserves 1962-66, 1968 and 1970, North 1961-71, Worcester Ladies Lacrosse Club. Hobbies include squash, tennis, reading and history.

**Third Man:** **Pat Beatty**, Queen Annes School. South, Reigate Lacrosse Club. Hobbies include all sport.

**Right Defence:** **Chris Chamberlain**, Oakdene School, Bedford C.P.E. Teacher of P.E. in Peterborough. England 1970-71, England Reserves 1969, Midlands 1968-71, Norwich Ladies Lacrosse Club. Hobbies include trampolining, squash and tennis.

**Left Defence:** **Moira Williams**, Haberdashers' Askes School, I.M. Marsh C.P.E. England Reserves 1969-71, South 1969-71, Putney Ladies Lacrosse Club. Hobbies include all kinds of sport and foreign travel.

**Centre:** **Judy Ashworth**, Birkenhead High School, I.M. Marsh C.P.E. Teacher of P.E. at Belvedere School. Midlands 1968-71, North 1971-72, Liverpool Ladies Lacrosse Club. Hobbies include camping, walking, swimming, photography, playing the guitar and crusaders.

**Right Attack:** **Celia Brackenridge**, Lady Eleanor Holles School, I.M. Marsh C.P.E. Student at Cambridge University. England 1970-71, England Reserves 1969, South 1968-72, Putney Ladies Lacrosse Club. Hobbies include cricket, athletics, hockey, tennis, swimming, golf, music and brass-rubbing.

**Left Attack:** **Margaret Knowles**, Wirral Grammar School for Girls, Bedford C.P.E. Student. England Reserves 1971, North 1969-71. Hobbies include swimming, horse riding, fell walking, tennis and knitting.

**Third Home:** **Belinda Blackburn**, Queen Anne's School, Dartford C.P.E. Teacher at School of St. Agnes and St. Michael, East Grinstead. England Reserves 1970, South 1965-71, Reigate Lacrosse Club. Hobbies include County tennis and studying for a degree in mathematics.

**Second Home:** **Sue Winn**, Queen Anne's School, Bedford C.P.E. Student. South 1970-71, Bedford C.P.E. Lacrosse Club. Hobbies include riding, sailing, tennis, singing, farming, cooking and travel.

**First Home:** **Janet Roberts**, Sherborne School for Girls, Bedford C.P.E. Teacher of P.E. at St. Swithun's School, Winchester. England 1963-65 and 1966-71, West, Salisbury Lacrosse Club. Hobbies include squash, home decorating and gardening.

**Centre Umpire:** **Miss L. Bailey.**  
**Goal:** **Miss A. Clapperton**  
**Umpires:** **Miss C. Macintosh**



## Australia v. England Reserves

PLEASE REPORT TO THE ORGANISER ON ARRIVAL.

Please *pay* if you have not already done so.

Captains—please be sure to arrange your Umpires.

THE BELL will be rung at 12.30 p.m. and again at 12.40 p.m.

The winning Captain should bring the score to the Organiser.

The FIRST MATCH will start promptly at 12.45 p.m. In the event of a team being late and having to forfeit the match, the opposition will be apportioned goals as decided by the Organiser.

The "Lucky Losers" will be the two teams with the next best goal averages.

The BELL will be rung at the start, half-time and end of each match.

Play will be 6 minutes each way with no half-time and 3 minutes between each match.

Injury time will *only* be allowed in the final.

There will be no extra time in the final, in the event of a draw.

**The P.E. Colleges are asked to be Pitch Stewards.**

**THE ORGANISER'S DECISION SHALL BE FINAL.**

## ORDER OF PLAY

**Saturday, 25th March, 1972—Group A**

(Matches 6 minutes each way)

Time	Pitch A	Umpire
11.30-12.20	ENGLAND RESERVES v AUSTRALIA	
12.45	Reigate II v Anstey	Chiltern
1.00	Hoylake v Chiltern	West London
1.15	<u>West London</u> v Scottish University	Anstey
1.30	Anstey v Chiltern	Reigate
1.45	Reigate I v Hoylake II	Scottish University
2.00	Chiltern v Scottish University	West London
2.15	Reigate I v <u>West London</u>	Hoylake II
2.30	Anstey v Hoylake II	Scottish University
2.45	Reigate I v Scottish University	Anstey
3.00	Chiltern v <u>West London</u>	Hoylake II
3.15	Hoylake II v Scottish University	Chiltern
3.30	Anstey v <u>West London</u>	Reigate I
3.45	Reigate I v Chiltern	Hoylake II
4.00	Anstey v Scottish University	West London
4.15	Hoylake II v <u>West London</u>	Scottish University
4.30	QUARTERFINAL v LUCKY LOSER I	PITCH A
4.45	SEMIFINALS	
5.00	FINAL	

**Pitch Stewards:** Anstey

## SCOREBOARD

[illegible]



**Saturday, 25th March, 1972—Group B**  
(Matches 6 minutes each way)

Time	Pitch B	Umpire
11.30-12.20	ENGLAND RESERVES v AUSTRALIA	
12.45	Putney I v Nonington	Bowdon
1.00	Dartford II v Bowdon	Cambridge
1.15	Cambridge v U.L.A.U.	Nonington
1.30	Nonington v Bowdon	Putney I
1.45	Putney I v Dartford II	U.L.A.U.
2.00	Bowdon v U.L.A.U.	Cambridge
2.15	Putney I v Cambridge	Dartford II
2.30	Nonington v Dartford II	U.L.A.U.
2.45	Putney I v U.L.A.U.	Nonington
3.00	Bowdon v Cambridge	Dartford II
3.15	Dartford II v U.L.A.U.	Bowdon
3.30	Nonington v Cambridge	Putney I
3.45	Putney I v Bowdon	Dartford II
4.00	Nonington v U.L.A.U.	Cambridge
4.15	Dartford II v Cambridge	U.L.A.U.
4.30	QUARTERFINAL v GROUP C	PITCH B
4.45	SEMIFINAL	
5.00	FINAL	

## SCOREBOARD

[illegible]

**Saturday, 25th March, 1972—Group C**  
(Matches 6 minutes each way)

<i>Time</i>	<i>Pitch C</i>	<i>Umpire</i>
11.30-12.20	ENGLAND RESERVES v AUSTRALIA	
12.45	I.M. Marsh v Birmingham	Harpenden
1.00	Reigate II v Harpenden	Epsom and Ewell
1.15	Epsom and Ewell v Beckenham	Birmingham
1.30	Birmingham v Harpenden	I.M. Marsh
1.45	I.M. Marsh v Reigate II	Beckenham
2.00	Harpenden v Beckenham	Epsom and Ewell
2.15	I.M. Marsh v Epsom and Ewell	Reigate II
2.30	Birmingham v Reigate II	Beckenham
2.45	I.M. Marsh v Beckenham	Birmingham
3.00	Harpenden v Epsom and Ewell	Reigate II
3.15	Reigate II v Beckenham	Harpenden
3.30	Birmingham v Epsom and Ewell	I.M. Marsh
3.45	I.M. Marsh v Harpenden	Reigate II
4.00	Birmingham v Beckenham	Epsom and Ewell
4.15	Reigate II v Epsom and Ewell	Beckenham
4.30	QUARTERFINAL v GROUP B	PITCH B
4.45	SEMIFINAL	
5.00	FINAL	

## SCOREBOARD

[illegible]



**Saturday, 25th March, 1972—Group D**  
(Matches 6 minutes each way)

<i>Time</i>	<i>Pitch D</i>	<i>Umpire</i>
11.30-12.20	ENGLAND RESERVES v AUSTRALIA	
12.45	Liverpool v Chelsea C.P.E.	N.E. Combined I
1.00	Southsea v N.E. Combined I	Chelsea Pens.
1.15	Chelsea Pensionaires v Watford	Chelsea C.P.E.
1.30	Chelsea C.P.E. v N.E. Combined I	Liverpool
1.45	Liverpool v Southsea	Watford
2.00	N.E. Combined I v Watford	Chelsea Pens.
2.15	Liverpool v Chelsea Pensionaires	Southsea
2.30	Chelsea C.P.E. v Southsea	Watford
2.45	Liverpool v Watford	Chelsea C.P.E.
3.00	N.E. Combined I v Chelsea Pensionaires	Southsea
3.15	Southsea v Watford	N.E. Combined I
3.30	Chelsea C.P.E. v Chelsea Pensionaires	Liverpool
3.45	Liverpool v N.E. Combined I	Southsea
4.00	Chelsea C.P.E. v Watford	Chelsea Pens.
4.15	Southsea v Chelsea Pensionaires	Watford
4.30	QUARTERFINAL v GROUP E	PITCH D
4.45	SEMIFINAL	
5.00	FINAL	

## SCOREBOARD

[illegible]

**Saturday 25th March, 1972—Group E**  
(Matches 6 minutes each way)

Time	Pitch E	Umpire
11.30-12.20	ENGLAND RESERVES v AUSTRALIA	
12.45	Dartford v Norwich	Hoylelake I
1.00	Hatch End II v Hoylelake I	W.I.V.A.B.
1.15	W.I.V.A.B. v Worcester	Norwich
1.30	Norwich v Hoylelake I	Dartford
1.45	Dartford v Hatch End II	Worcester
2.00	Hoylelake I v Worcester	W.I.V.A.B.
2.15	Dartford v W.I.V.A.B.	Hatch End II
2.30	Norwich v Hatch End II	Worcester
2.45	Dartford v Worcester	Norwich
3.00	Hoylelake I v W.I.V.A.B.	Hatch End II
3.15	Hatch End II v Worcester	Hoylelake I
3.30	Norwich v W.I.V.A.B.	Dartford
3.45	Dartford v Hoylelake	Hatch End II
4.00	Norwich v Worcester	W.I.V.A.B.
4.15	Hatch End II v W.I.V.A.B.	Worcester
4.30	QUARTERFINAL v GROUP D	PITCH D
4.45	SEMIFINAL	
5.00	FINAL	

## SCOREBOARD

[illegible]



## ORDER OF PLAY

**Saturday, 25th March, 1972—Group F**

(Matches 6 minutes each way)

Time	Pitch F	Umpire
11.30–12.20	ENGLAND RESERVES v AUSTRALIA	
12.45	Bedford v Avon	Flixton
1.00	Oxford v Flixton	Hatch End I
1.15	Hatch End I v N.E. Combined II	Avon
1.30	Avon v Flixton	Bedford
1.45	Bedford v Oxford	N.E. Combined II
2.00	Flixton v N.E. Combined II	Hatch End I
2.15	Bedford v Hatch End I	Oxford
2.30	Avon v Oxford	N.E. Combined II
2.45	Bedford v N.E. Combined II	Avon
3.00	Flixton v Hatch End I	Oxford
3.15	Oxford v N.E. Combined II	Flixton
3.30	Avon v Hatch End I	Bedford
3.45	Bedford v Flixton	Oxford
4.00	Avon v N.E. Combined II	Hatch End I
4.15	Oxford v Hatch End I	N.E. Combined II
4.30	QUARTERFINAL v LUCKY LOSER II	PITCH E
4.45	SEMIFINAL	
5.00	FINAL	

*Pitch Stewards:* Bedford

## SCOREBOARD

Club/ College	Bedford	Avon	Oxford	Flixton	Hatch End I	N.E.II Combined	F	A	TOTAL
Bedford									
Avon									
Oxford									
Flixton									
Hatch End I									
N.E.II Combined									

Reserves may be brought and played in the team.

### Quarterfinals

WINNER GROUP A }  
LUCKY LOSER I }

WINNER GROUP B }  
WINNER GROUP C }

WINNER GROUP D }  
WINNER GROUP E }

WINNER GROUP F }  
LUCKY LOSER II }

### Semifinals

### Final

WINNER

ALL PUBLICATIONS, KILT PINS, DISHES AND DIARIES ARE AVAILABLE  
AT THE ORGANISERS' TABLE.

ARE YOU AN INDIVIDUAL MEMBER OF THE ASSOCIATION?

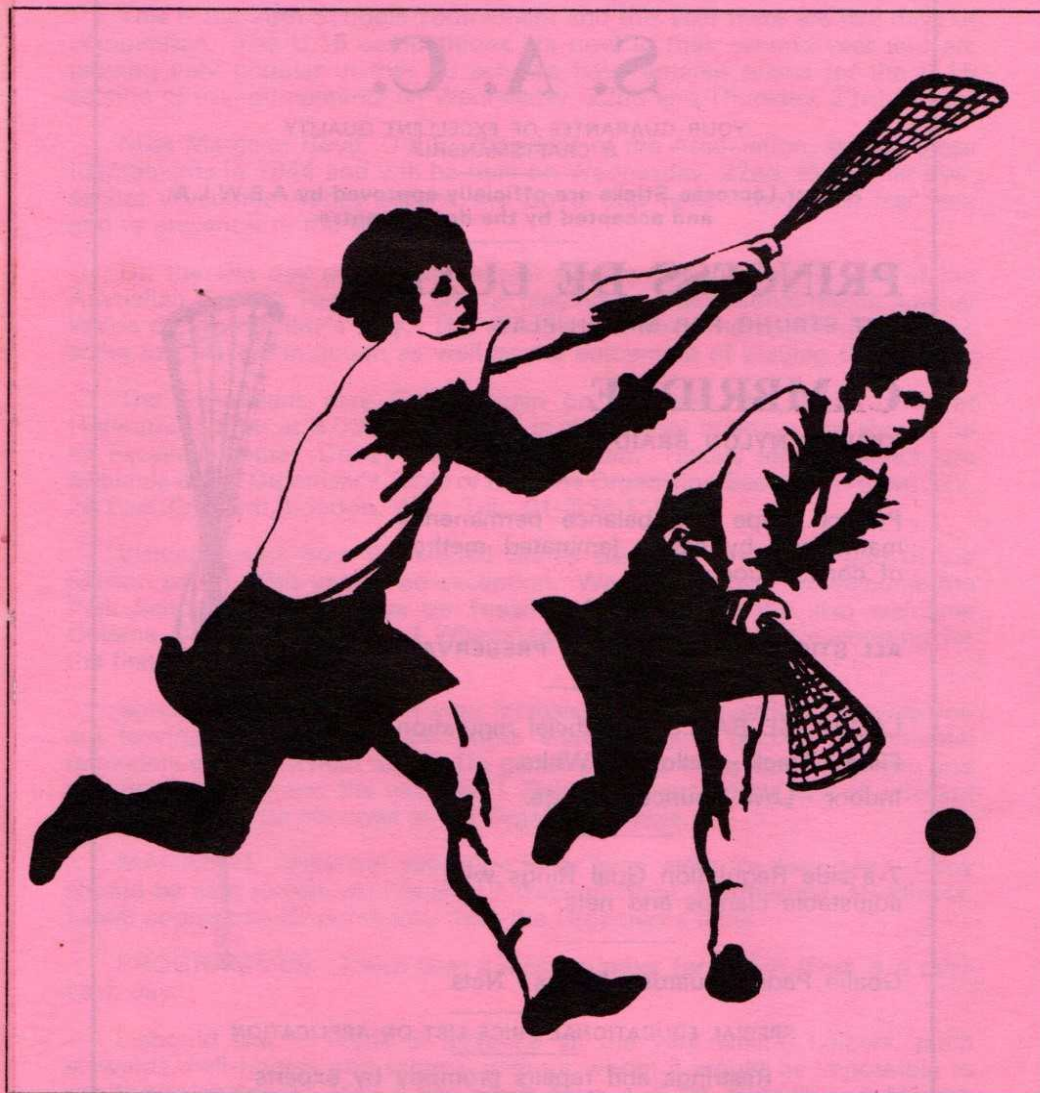
DO YOU TAKE THE MAGAZINE?

ARE YOU GOING TO THE GREAT BRITAIN v AUSTRALIA MATCH?

ALL ENQUIRIES, FORMS AND TICKETS AT THE ORGANISERS' TABLE.



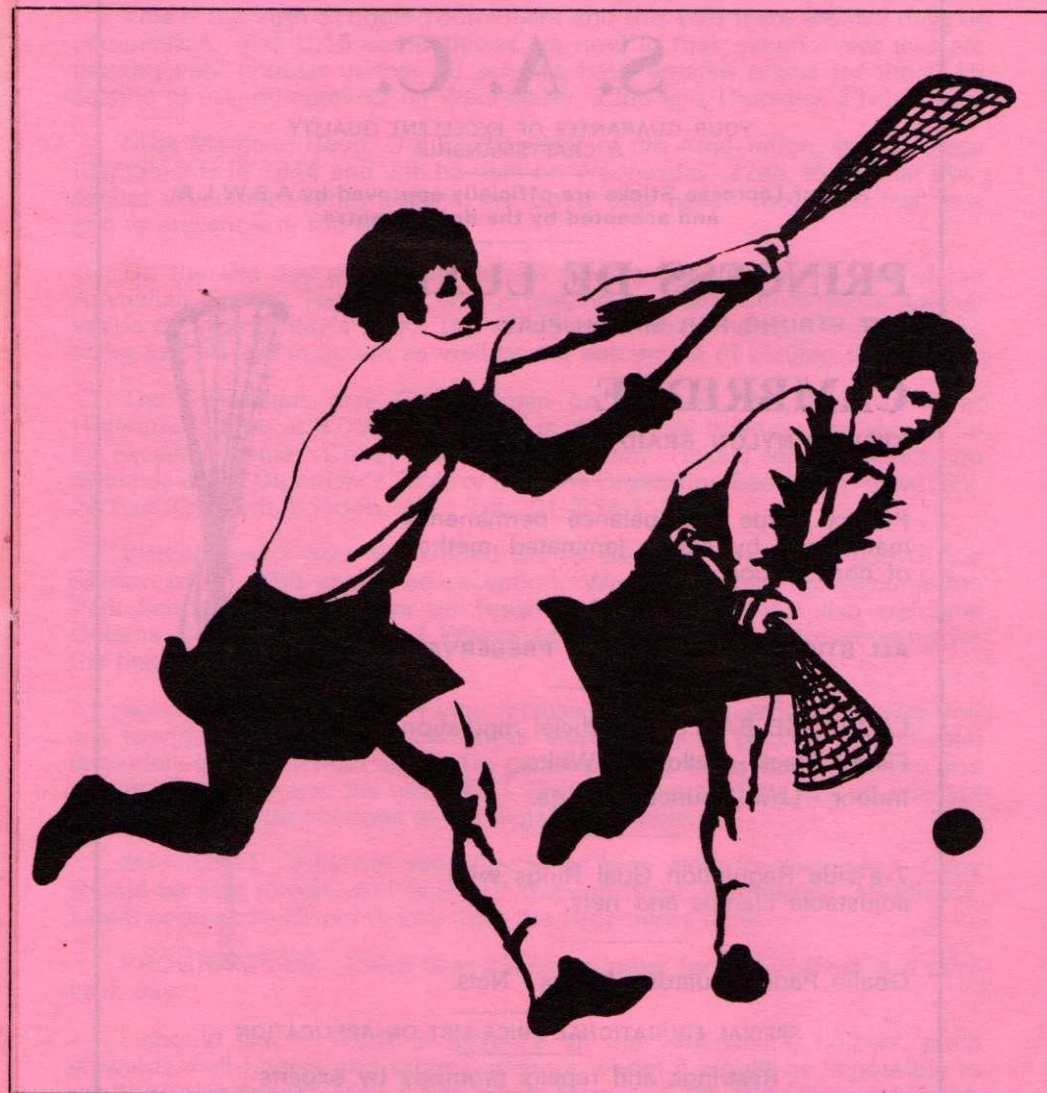
ALL ENGLAND WOMEN'S LACROSSE ASSOCIATION



**AUSTRALIA v. WALES**  
DURING  
**1972 SCHOOLS TOURNAMENT**  
Merton Abbey, S.W.19  
**WEDNESDAY, 29th MARCH, 1972**

*Wen 5-4*

ALL ENGLAND WOMEN'S LACROSSE ASSOCIATION



**AUSTRALIA v. WALES**  
DURING  
**1972 SCHOOLS TOURNAMENT**  
Merton Abbey, S.W.19  
**WEDNESDAY, 29th MARCH, 1972**

*Wen 5-4*



# S. A. C.

YOUR GUARANTEE OF EXCELLENT QUALITY  
& CRAFTSMANSHIP

All our Lacrosse Sticks are officially approved by A.E.W.L.A.  
and accepted by the design centre

## PRINCESS DE LUXE

GUT STRUNG FOR MATCH PLAY

## CAMBRIDGE

STRUNG NYLON BRAID FOR BEGINNERS

Perfect shape and balance permanently  
maintained by patent laminated method  
of construction.

ALL STICKS TREATED WITH PRESERVATIVE

LACROSSE BALLS — Official regulation

Field - Black - Yellow or White.

Indoor - Low Bounce, Orange.

7-a-side Regulation Goal Rings with  
adjustable clamps and nets.

Goalie Pads - Guards - Masks - Nets

SPECIAL EDUCATIONAL PRICE LIST ON APPLICATION

Restrings and repairs promptly by experts

Miniatures presented to Tournament Finalists

## SPORTS ACTIVITY Co. Ltd.

Chetwynd House, Camps Road, Bartlow, S. Cambs.

CB1 6PP



## FOREWORD

This is the 28th Schools Tournament and this year there are five days of competition. The U.15 competitions are now in their second year and are proving very popular in that 30 schools have entered teams for the U.15 section of the tournaments on Wednesday, 22nd and Thursday, 23rd March.

Miss Margaret Boyd, O.B.E., President of the Association, started these tournaments in 1944 and will be here on Wednesday, 22nd, to see her own school Wycombe Abbey defend the Boyd Cup which they won last year and to present it to the winners.

On the last day of the tournament we are honoured by a visit of the Australian Touring Team who will be playing an international match against Wales during the day's play. The schools will have the opportunity to see some top players in action as well as the enjoyment of playing themselves.

The Australians play Great Britain on Saturday, 8th April, 1972, at Hurlingham Park at 3.00 p.m. This is in the school holidays but should be an excellent game. Do try and go if you can. Tickets for this match are available at the Organiser's Table or from the Organising Secretary, Room 322, 26 Park Crescent, London, W.1. Tel.: 01-636 1123.

Visiting teams from the United States are now very much part of the Merton scene. This year is no exception. We are delighted to welcome the Park School from Baltimore on Tuesday, 28th March. We also welcome Coloma Convent 1st XII and Wheathampstead U.15 who are entering for the first time.

School leavers, don't feel your lacrosse career is over just because you are leaving. Your sticks and boots shouldn't just become sentimental reminders of your school days! Do go on playing, the game needs you and you need the fun and the exercise!! School leavers' forms and all relevant information can be obtained at the Organiser's table.

MAGAZINE. Why not subscribe to or even write for *Lacrosse*? Copy should be sent to Mrs. A. Henson, 7 Gatehill Road, Northwood, Middlesex. Latest copies can be purchased from the Organiser's table.

PROGRAMMES. These bear a lucky number for which there is a prize each day.

I should like to thank in advance all the very willing helpers, pitch stewards, bell-ringers and scorers, without whom it would be impossible to run the tournament. May I also thank Miss J. S. D. Willson and Miss J. Pryke for their help and patience, Mr. Brailsford and his staff for the refreshments and the excellent state of the pitches and finally the hard worked and harassed games staff who coach and get the teams here in the first place and without whose enthusiasm there wouldn't be a Tournament at all.

Jean Dodd,

*Hon. Schools' Organiser.*





**Helen Stevens**—Australian Team 1968–70 and 1972, South Australian Team 1966–71, Plympton Club 1966–71. Secretary. Hobbies include softball and basketball.



**Paula Stockholm**—Australian Team 1965, 1970 and 1972, South Australian Team 1963–66, 1970–71, Plympton Club 1963–66, 1970–71. Secretary—Flinders University. Hobbies include squash, baseball and reading.



**Pat Forrester** is the manageress of the Australian Touring Team. She is very active both on and off the lacrosse field. In 1965 Pat started and played for the East Torrens Club, from 1966–71 was South Australian delegate for the Australian Council, in 1966 was goal-keeper for the State Team, from 1967–71 managed the State Team, from 1969–70 managed the Australian Team, from 1969–71 was elected a member of the State Association, in 1970 was editor of the first Australian Women's Lacrosse rule book, in 1971 was Vice-President of the Australian Council and is now the manageress of the first tour to Great Britain by an Australian Women's Lacrosse Touring Team. As well as her lacrosse interests she is a private secretary and housewife with three children. Her special interests, when she can find the time, are squash and cooking.

## WELSH TEAM

Colours—Green & Yellow

Goal:	C. HAYDN-EVANS, Belvedere and Liverpool Ladies Lacrosse Club.
Point:	W. WILLIAMS, South Wilts Grammar School and Glamorgan & Monmouth Ladies Lacrosse Club.
Cover Point:	V. FAIRCLOUGH, Belvedere and Liverpool Ladies Lacrosse Club.
Third Man:	P. TURVEY, Howells, Llandaff and Avon Ladies Lacrosse Club.
Right Defence:	E. EDWARDS, Captain, Howells, Llandaff and Glamorgan & Monmouth Ladies Lacrosse Club.
Left Defence:	P. DUNN, Wycombe Abbey and Chiltern Ladies Lacrosse Club.
Centre:	B. DAVIES, St. Martins, Solihull and Oxford Ladies Lacrosse Club.
Right Attack:	S. EDWORTHY, Malvern Girls College and Glamorgan College of Education Lacrosse Club.
Left Attack:	S. TREMBATH, Hawnes School and Cambridge City Ladies Lacrosse Club.
Third Home:	J. HERBERT, Belvedere and Nottingham University Ladies Lacrosse Club.
Second Home:	L. BAILEY, Howells, Llandaff and Worcester Ladies Lacrosse Club.
First Home:	L. WORRELL, Belvedere and Oxford Ladies Lacrosse Club.





**For real  
attacking  
power!**

**drink Nutrament—the liquid energy food**

*NUTRAMENT is a Nutritionally balanced complete meal that is rapidly digested even by the most nervous of players and solves the problem of what to eat before and after a game.*

*NUTRAMENT taken as a meal replacement two hours before a game satisfies the appetite and provides the essential nutrients necessary for strength speed and stamina. It has already gained wide acceptance by top athletes and coaches. Ready to drink straight from the can, needs no preparation.*

*Ask your chemist about NUTRAMENT or write to us for a descriptive booklet.*

*NUTRAMENT is available in 3 delicious flavours, cherry, chocolate and vanilla, price 26p. for a 13 oz can.*

**Nutrament** *the food for sport*

Mead Johnson Laboratories, Division of Bristol-Myers Company  
Limited, Stonefield Way, Ruislip, Middlesex.

## ORDER OF PLAY

**Wednesday, 29th March, 1972—Farr Cup**

(Matches 9 minutes each way)

Time	Pitch 1	Umpire
11.45	Guildford U.15 v Stover	Walthamstow
12.10	Howells 'A' v Walthamstow Hall 1st	Stover
12.35	Guildford U.15 v Walthamstow Hall 1st	Howells
1.00	Howells 'A' v Stover	Guildford
1.30–2.30	AUSTRALIA v WALES	
2.35	Howells 'A' v Guildford U.15	Walthamstow
3.00	Stover v Walthamstow Hall 1st	Howells

## SCOREBOARD

School	Howells A	Guildford U.15	Walthamstow Hall 1st	Stover	F	A	TOTAL
Howells A							
Guildford U.15							
Walthamstow Hall 1st							
Stover							



## ORDER OF PLAY

Wednesday, 29th March, 1972—Farr Cup  
(Matches 9 minutes each way)

Time	Pitch 2	Umpire
11.45	Croham Hurst 2nd v Greenacre	Howells
12.10	St. Maurs 'A' v Howells 2nd	Greenacre
12.35	Croham Hurst 2nd v Howells 2nd	St. Maurs
1.00	St. Maurs 'A' v Greenacre	Croham Hurst
1.30–2.30	AUSTRALIA v WALES	
2.35	St. Maurs 'A' v Croham Hurst 2nd	Howells
3.00	Greenacre v Howells 2nd	St. Maurs

## SCOREBOARD

School	St. Maurs 'A'	Howells 2nd	Croham Hurst 2nd	Greenacre	F	A	TOTAL
St. Maurs 'A'							
Howells 2nd							
Croham Hurst 2nd							
Greenacre							

## ORDER OF PLAY

Wednesday, 29th March, 1972—Farr Cup  
(Matches 9 minutes each way)

Time	Pitch 3	Umpire
11.45	St. Philomenas 'A' v Romford Technical	Croham Hurst
12.10	Howells 'B' v Croham Hurst 1st	Romford Technical
12.35	St. Philomenas 'A' v Croham Hurst 1st	Howells
1.00	Howells 'B' v Romford Technical	St. Philomenas
1.30–2.30	AUSTRALIA v WALES	
2.35	Howells 'B' v St. Philomenas 'A'	Croham Hurst
3.00	Romford Technical v Croham Hurst 1st	Howells

## SCOREBOARD

School	Howells 'B'	Romford Technical	Croham Hurst 1st	St. Philomena's 'A'	F	A	TOTAL
Howells 'B'							
Romford Technical							
Croham Hurst 1st							
St. Philomena's 'A'							



## ORDER OF PLAY

Wednesday, 29th March, 1972—Farr Cup

(Matches 9 minutes each way)

Time	Pitch 4	Umpire
11.45	Walthamstow Hall 2nd v Howells U.15	Claremont
12.10	Guildford 1st v Claremont 'A'	Howells
12.35	Walthamstow Hall 2nd v Claremont 'A'	Guildford
1.00	Guildford 1st v Howells U.15	Walthamstow
1.30–2.30	AUSTRALIA v WALES	
2.35	Guildford 1st v Walthamstow Hall 2nd	Claremont
3.00	Howells U.15 v Claremont 'A'	Guildford

## SCOREBOARD

School	Guildford 1st	Howells U.15	Walthamstow Hall 2nd	Claremont 'A'	F	A	TOTAL
Guildford 1st							
Howells U.15							
Walthamstow Hall 2nd							
Claremont 'A'							